



Water Pure Filtration

(The Total Water Solution)

ISO 9001:2015

☎ 9909538531,8849138149

✉ waterpurefiltration@gmail.com
sales@waterpurefiltration.com

🌐 www.waterpurefiltration.com

INTRODUCTION

Water Pure Filtration is an engineering group specializing in custom designed and manufactured plants related to Water treatment for industrial, commercial and municipal applications.



We are a multi-disciplined company specialized in providing design, turnkey execution services in the field of Water treatment & waste water treatment, Water Recirculation, reuse & Zero liquid Discharge system, Solid waste & sludge management.

We provide end-to-end solutions with in-house capabilities of design, engineering, procurement, construction, commissioning and operation.

We are well known for our after sales services. Our preventive maintenance services keep Plant Performance at peak efficiency. In an effort towards this objective, we offer operation and maintenance services to our clients.

Our project management skills have been put to test in many projects where quality & on-time completion has been vital.

Highly progressive and forward looking, we strive for customer focused approach and continuous quest for delivering world class projects to our valued customers.

We Offer to design, manufacture and execute turnkey projects, including commissioning & process guarantees.

“Customer satisfaction is always in the forefront of Water pure Filtration business.”

“We are always appreciated by our customers for our after sales service.”



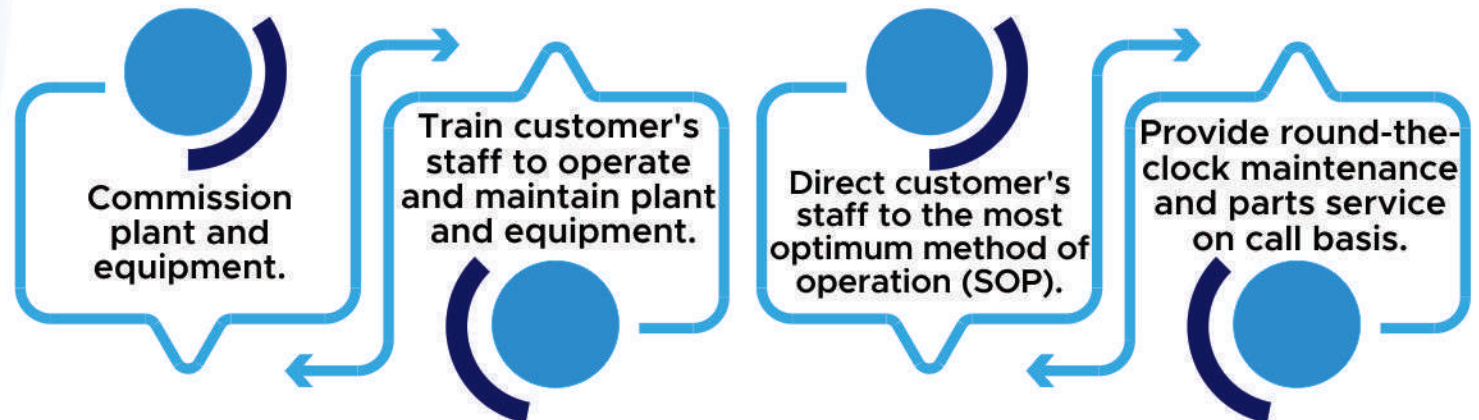
MISSION

WATER PURE FILTRATION applies state-of-the art advance separation technology to manufacture the industry's most advanced high performance water treatment plants. You get the benefits of quality design, reliable components, and integrated systems fully backed with in house manufacturing and testing facility.

VISION

WATER PURE FILTRATION is committed to continue improvement and effectiveness of its product through quality management system. We will actively pursue our goal defect-free exceed our customer's requirements. Our management is committed to providing our employees with the necessary resources and environment to carry our these goals. These resources will focus primarily on the prevention of defects, meeting our customer's needs, and continual improvement. Our commitment goes beyond simple contracts. We build long-term relationship with our customers and continuing bases. We keep on building our key strengths with technological expertise and our ability to offer innovative and integrated solutions to our customer's economic and environmental needs on a national scale.

Our trained staff is experienced to carry out



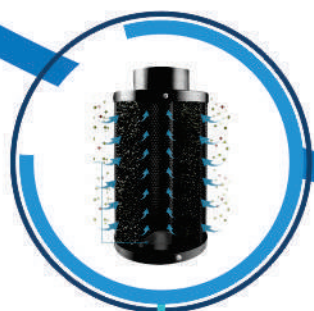
TREATMENT SCHEME

As we specialize in water and wastewater treatment problems, we offer a comprehensive range of Customer Specific products and services.

RAW WATER TREATMENT SOLUTION

Water treatment to improve quality of water to acceptable standard of end-use, so that the water becomes fit for its desired end-use.

Some process for raw water treatment carried out by us are-



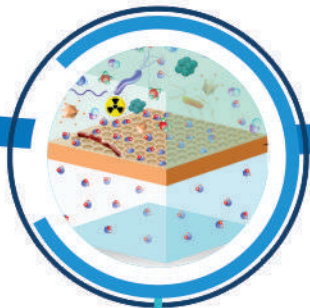
For Suspended Particles Removal

- Sand Filter
- Activated carbon filter
- Continuous sand filters



For Turbidity & Particles Removal (by physiochemical treatment)

- Clari-flocculator
- Sand Filter
- Activated carbon filter
- Continuous sand filters
- Micro and Ultrafiltration Systems



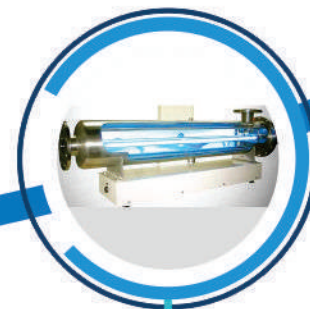
For Major dissolved inorganics removal

- Resin based softener
- DM plant
- De-aeration
- Reverse osmosis
- Nano filtration
- Distillation plant(WFI Plant)



For Major dissolved organics Removal

- Aeration
- RO system
- Nano filtration



For Pathogens Removal

- Ultra filtration
- UV treatment
- Ozonation
- Chlorination

A photograph showing several large blue cylindrical tanks in an industrial setting, connected by pipes and valves. The tanks are part of a filtration system.

FILTRATION SYSTEM

A photograph of a water softening system featuring two large green cylindrical tanks with various pipes and control panels.

SOFTENING SYSTEM

A photograph of a Reverse Osmosis (RO) plant with two large green cylindrical tanks and associated piping.

RO PLANT

A photograph of a Demineralization (DM) plant showing several green cylindrical tanks and complex piping.

DM Plant

A photograph of an ultrafiltration system consisting of a long row of white cylindrical membrane modules.

ULTRAFILTRATION SYSTEM

FILTRATION SYSTEM

Water filtration is a general term that refers to any system or process that is used to filter out particles and pollutants from water. ... Anything that removes any amount of particles, sediment, bacteria, and the chlorine taste can be called water filtration. If it has a filter of any type, it's a filtration system.

WATER SOFTENING SYSTEM

A hard water softener is an appliance that uses sodium chloride, also known as salt, to treat hard water. In water softening process the water supply passes through the water softener over resin beds, rows of resin beads perform an ion-exchange.

REVERSE OSMOSIS SYSTEM (RO PLANT)

RO is a special type of filtration that uses a semi-permeable, thin membrane with pores small enough to pass pure water through while rejecting larger molecules such as dissolved salts (ions) and other impurities such as bacteria. Drinking water treated with RO or other filtration systems has many advantages: Many RO systems remove the good with the bad. Iron, calcium, manganese, & fluoride are a few of the beneficial chemicals that may be removed, depending on your system.

DEMINERALIZATION SYSTEM (DM Plant)

Demineralization of water is achieved by passing water through Cation Resin Column and then through Anion Resin Column. When minerals, which are salts of acid and base, dissolve in water, they get ionized in to Cations and Anions. Demineralized water is produced by passing water through multiple stages of ion exchange resins and zeolites to a point where there is nothing but water left.

MIX BED SYSTEM

Mixed bed resins or mixed bed ion exchange resins are mainly used in the water purification industry for polishing process water to achieve demineralized water quality (such as after a reverse osmosis system). Mixed bed as the name states consists of strong acid cation exchange and strong base anion exchange resin.

ULTRAFILTRATION SYSTEM

Ultrafiltration (UF) is a pressure-driven barrier to suspended solids, bacteria, viruses, endotoxins and other pathogens to produce water with very high purity and low silt density. Ultrafiltration (UF) is a variety of membrane filtration in which hydrostatic pressure forces a liquid against a semi permeable membrane.

WASTE WATER TREATMENT SOLUTION

EFFLUENT TREATMENT PLANT

- Screening – manual & automatic
- Oil & grease separator – automated belt oil skimmer & Tilted plate separator
- Primary Treatment – consisting of pH correction, Coagulation, flocculation, sedimentation
- Trickling filter & Striping – Removal of volatile organics
- Biological treatment – for BOD /COD removal using processes –
- Anaerobic process, activated sludge process, extended aeration,
- Sequencing batch reactor (SBR),
- Moving bed bioreactor (MBBR),
- PACT & Membrane Bio-reactors (MBR).



SEWAGE TREATMENT PLANT

Sewage can be treated close to where the sewage is created, which may be called a "decentralized" system or even an "on-site" system (in septic tanks, bio-filters or aerobic treatment systems). Alternatively, sewage can be collected and transported by a network of pipes and pump stations to a municipal treatment plant. This is called a "centralized" system.



Reuse of Water- removal of contaminants from waste water & return to the water cycle with minimum impact on the environment , Water reclamation - treated wastewater can then be used for other purposes.

Treatment process takes place in a wastewater treatment plant (WWTP), or Water Resource Recovery Facility (WRRF) or a sewage treatment plant (STP).

ZERO LIQUID DISCHARGE (ZLD) SYSTEMS

ZLD systems employ advanced wastewater treatment technologies to purify and recycle virtually all of the wastewater produced. Conventional ZLD approach is with thermal technologies such as evaporators (multi stage flash (MSF), multi effect distillation (MED), Mechanical vapor compression (MCV)) and Crystallizers with recovery of their condensate. ZLD plants produce solid waste along with water of low TDS. Integrated recycling system designed by us includes –

- Physiochemical, biological (aerobic / anaerobic) treatment
- membranes separation process for optimum water recovery.
- Our system includes processes used as –
 - up gradated advanced effluent treatment process
 - tertiary treatment
 - micro filtration, ultra filtration, Nano-filtration, reverse osmosis
 - membrane bio-reactor.



MULTI EFFECT EVAPORATION SYSTEM (MEE)

High TDS waste water is generated with installation of ETP and Membrane system. MEE handles remaining 10 % or so, of RO reject water. We have developed system having very low Operation Cost to treat high TDS RO reject water through multi process MEE.

OUR PRODUCTS

01

Sedimentation

07

UV System

13

Boiler & Cooling Tower
Chemicals

02

Media and Anthracite
Filtration

08

Water Quality Monitoring
Instruments such as TDS /
Conductivity / pH etc.

14

Domestic Softener
And Purifier

03

ION Exchange Based Water
Softener & Demineralization

09

Swimming Pool System

15

Water Testing Kit

04

Membranes Based Separation
Processes Such As NF, UF& RO

10

Waste Water Treatment
And Recycle System

16

Ozonation System

05

As per ISI Package Drinking/
Mineral Water Plant

11

ETP/STP System

17

Dyes Chemicals RO Plant

06

Dosing System

12

Hydro-Pneumatic Pressure
Boosting Systems

18

All type water treatment
plant spares available

APPLICATION

Power Plant

Chemical Industries

Oil & Gas sector

Textile Industries

Dairy and Food Industries

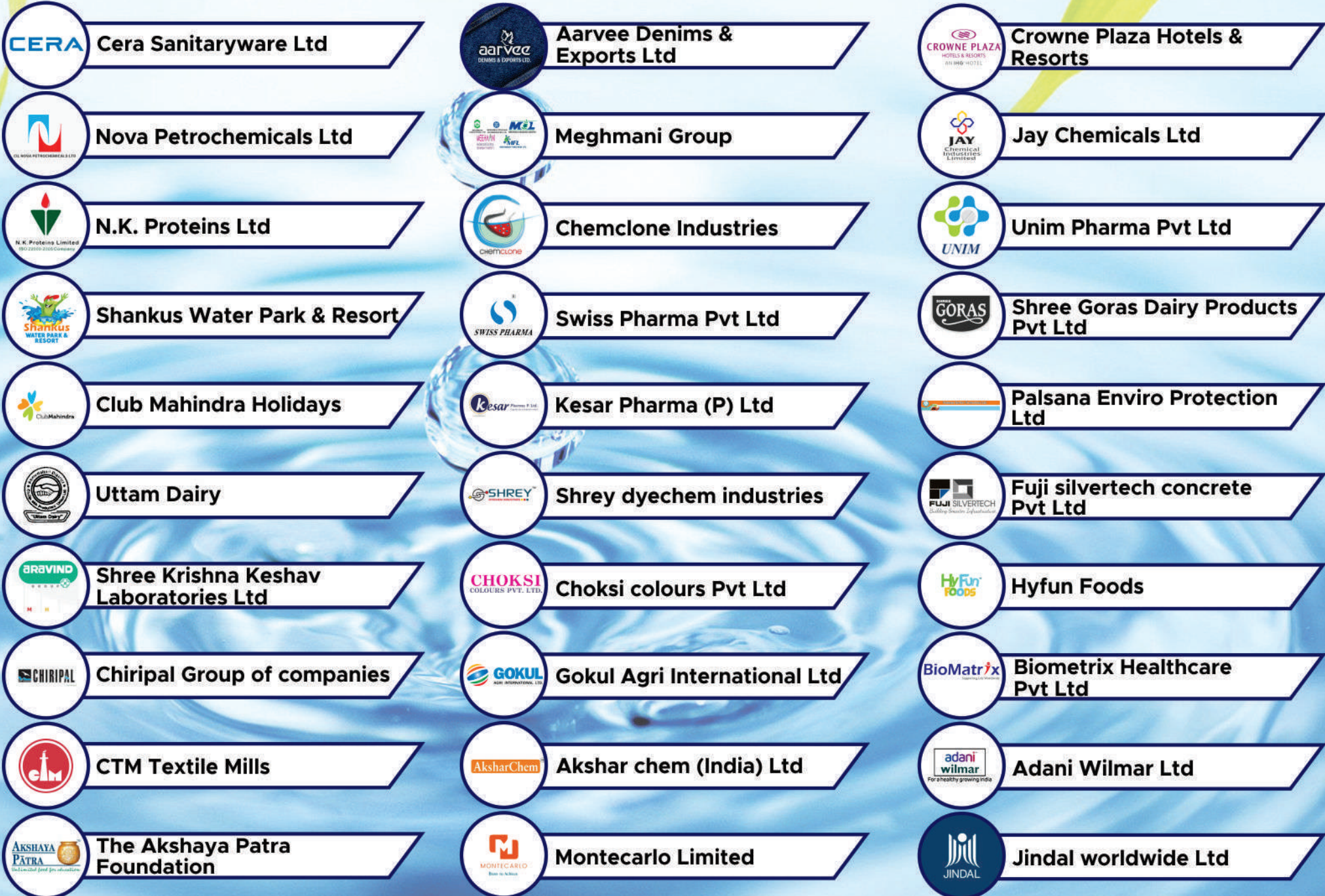
Pharmaceutical Industry

Commercial Hotels & Malls

Resorts & Pool Filtration



OUR VALUABLE CUSTOMERS



ALL TYPE OF WATER TREATMENT CHEMICALS

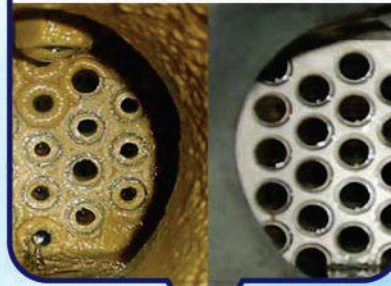
**Boiler
Chemicals**



**Cooling
Tower Chemicals**



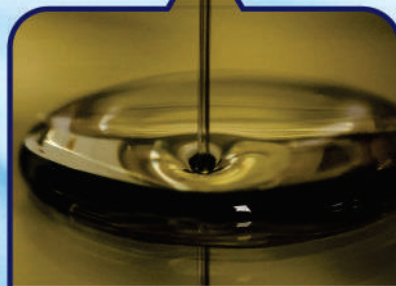
**Descalants/
Passivators**



**RO Plant
Chemicals**



**Effluent Treat-
ment Chemicals**



**Fuel
Chemicals**



**MEE Plant
Chemicals**

Components



Dosing Pumps



Membranes



Media & ION Exchange Resing



FRP Vessels



All type Cartridge Filters



All type of Water Treatment Chemicals



Multiport Valves




Instruments



Water Pure Filtration
(The Total Water Solution)
ISO 9001:2015

 Office
95, Gajanand Industrial Park,
Nr. Ambica Tubewell, Vatva
Railway Bridge, Opp. Slum
Quarter, Vatva, Ahmedabad
PIN 382440

 Manufacturing Unit
B-18 Tirth Bhumi Part- 2
Bakrol Gatrad Road
Bakrol
PIN 382210